

REVIEW

Open Access



# Prevalence of depression and anxiety in patients with Tourette syndrome; 1997 to 2022: a systematic review and meta-analysis

Parvin Abbasi<sup>1</sup> , Sepideh Tanhaie<sup>2</sup> and Mohsen Kazemina<sup>3\*</sup>

## Abstract

Tourette Syndrome (TS) is a disorder in which the patient has a history of multiple motor and vocal tics. Depression and anxiety are common in these patients. The results of the studies show different prevalence of these disorders in patients with TS. So, the objective of the present study was to liken the prevalence of depression and anxiety in patients with TS by systematic review and meta-analysis. The present study was conducted according to PRISMA guidelines during 1997–2022. The articles were obtained from Scopus, Embase, PubMed, Web of Science (WoS) and Google Scholar databases.  $I^2$  was used to investigate heterogeneity between studies. Data were analyzed by comprehensive meta-analysis software (Version 2). Finally, 12 articles with a sample size of  $n = 3812$  were included in the study. As a result of combining the results of the studies, the total estimate of the prevalence of depression and anxiety in patients with TS was 36.4% (95% confidence interval: 21.1–54.9%) and 53.5% (95% confidence interval: 39.9–66.6%), respectively. The results of meta-regression showed that by increasing mean age (9–31.5 years), the prevalence of depression and anxiety in patients with TS increased significantly ( $P < 0.001$ ). The results of the present study showed that the prevalence of depression and anxiety was high in patients with TS. Therefore, it is suggested that health officials and policy makers design measures to prevent and control these disorders.

**Keywords** Prevalence, Depression, Anxiety, Tourette syndrome, Meta-analysis

## Introduction

Disorders of early life remaining throughout life are called neurodevelopmental disorders [1]. These disorders usually appear early in a child's development, often before they reach school age. Defects associated with these disorders include personal, social, educational, or occupational dysfunction. These disorders may show significant

changes over time [1, 2]. Childhood and adolescence disorders can delay and / or even hinder children's social development [3].

Tic disorders are a group of neurodevelopmental disorders that commonly begin in childhood and adolescence and may be constant or alternatively severe over time [1, 3]. Tics are repetitive, involuntary, inharmonic and sudden movements or sounds that can involve distinct muscle groups and often appear between the ages of 4 and 6. These disorders are divided into TS, chronic motor or vocal tics, and transient tics [4]. The prevalence of tic disorders is higher in children than adults. Thus, about 5–30 out of ten thousand children and only 1–2 out of ten thousand adults have this disorder [5].

Diagnostic criteria for Tourette syndrome based on DSM-5 include (1) multiple motor tics and one or more

\*Correspondence:

Mohsen Kazemina  
mkazemina69@gmail.com

<sup>1</sup> Department of Nursing, School of Nursing and Midwifery, Kermanshah University of Medical Sciences, Kermanshah, Iran

<sup>2</sup> School of Medicine, Kermanshah University of Medical Sciences, Kermanshah, Iran

<sup>3</sup> Student Research Committee, Kermanshah University of Medical Sciences, Kermanshah, Iran



© The Author(s) 2023. **Open Access** This article is licensed under a Creative Commons Attribution 4.0 International License, which permits use, sharing, adaptation, distribution and reproduction in any medium or format, as long as you give appropriate credit to the original author(s) and the source, provide a link to the Creative Commons licence, and indicate if changes were made. The images or other third party material in this article are included in the article's Creative Commons licence, unless indicated otherwise in a credit line to the material. If material is not included in the article's Creative Commons licence and your intended use is not permitted by statutory regulation or exceeds the permitted use, you will need to obtain permission directly from the copyright holder. To view a copy of this licence, visit <http://creativecommons.org/licenses/by/4.0/>. The Creative Commons Public Domain Dedication waiver (<http://creativecommons.org/publicdomain/zero/1.0/>) applies to the data made available in this article, unless otherwise stated in a credit line to the data.

vocal tics sometimes present during the disease (though not necessarily simultaneously), (2) the frequency of tics may increase and reduce, but continue for more than a year since the beginning of the first tick, (3) before 18 years old, (4) this disorder is not caused by the effects of drugs (such as cocaine) or other physical diseases such as Huntington's disease, inflammation of the brain after the virus, and etc. [4]. The meta-analysis of TS in China reported the prevalence in children as 1.7% [6], 0.52% in USA [7] and 0.11% in Polish in adults [8]. The prevalence of TS in boys is 3 times higher than in girls [5].

Anxiety and depression are among the most important issues studied by psychologists, psychiatrists and behavioural scientists around the world [9]. Among physical and mental diseases, depression is the number one problem in the world. Depression is one of the most important mood disorders that is associated with low mood, loss of interest, guilt and worthlessness, sleep and appetite disorders, reduced energy and poor concentration. Depression and anxiety are the most common psychiatric disorders with a prevalence of 10–20% in the general population [10]. Approximately 15% of the total population experience a period of major depression at some point in their lives [11]. Anxiety is an unpleasant and unknown state that affects a person and is accompanied by symptoms such as fatigue, restless and heartbeat. The genetic, hereditary, environmental, psychological, social and biological factors are involved in the etiology of anxiety [12]. A person who is constantly exposed to anxiety loses his self-confidence and feels depressed while feeling humiliated, which in turn will fuel the vicious cycle of job stress and efficiency. Continuation of this cycle can gradually erode the mental and physical abilities of individuals and after a while lead to unstable nervous disorders [13].

Several preliminary studies have been conducted on the prevalence of depression and anxiety in patients with TS in different parts of the world, but these studies have investigated the prevalence in a small environment with a smaller sample size. The results of studies showed different prevalence of these disorders in different populations. Also, none of these studies have investigated the effect of potential factors such as age and prevalence over time. So, the objective of the present study was to standardize the prevalence of depression and anxiety in patients with TS by systematic review and meta-analysis.

## Methods

The present systematic review and meta-analysis was conducted according to PRISMA 2020 guidelines [14] during 1997–2022. The articles entered the meta-analysis were obtained from Scopus, Embase, PubMed, Web of Science (WoS) and Google Scholar databases. Keywords

used in the search included "Prevalence", "Epidemiology", "Prevalent\*", "Tourette syndrome", "Depression", "Depressive Disorder", "Depress\*", "Anxiety\*", and "Anxieties" and in combination using (or) and (and) operators. Keywords were validated using MeSh for PubMed and Emtree for Embase. The study search did not consider any time or language restrictions to retrieve all possible related articles by January 2022. Finally, Google Scholar and the references of all articles entered the meta-analysis were manually searched. For example, PubMed search strategy was defined as follows:

```
(((((Epidemiology[MeSH Terms] OR
(Prevalence[MeSH Terms]) OR (Epidemiology[Title/
Abstract])) OR (Prevalance[Title/Abstract])) OR
(Prevalence[Title/Abstract])) OR (Prevalent*[Title/
Abstract])) OR ("Prevalences"[Title/Abstract]))
OR ("Prevalence s"[Title/Abstract])) AND (((("Tou-
rette's syndrome"[Title/Abstract]) OR ("Tou-
rette syndrome"[Title/Abstract])) OR ("Tourette
syndrome"[MeSH Terms])) AND (((Depression[MeSH
Terms]) OR ("Depressive Disorder"[MeSH Terms]))
OR (Depress*[Title/Abstract])) OR (((Anxiety[MeSH
Terms]) OR (Anxiety*[Title/Abstract])) OR
(Anxieties[Title/Abstract]))).
```

In order to reduce publication bias and error, all stages of searching in different databases, review, selection, data extraction and quality evaluation of articles were performed by two researchers, and in case of disagreement, first with discussion, then review and finally according to the opinion of the third person, an agreement was reached.

## Inclusion criteria

1. Original Research Articles
2. Observational articles (cross-sectional study, case study and cohort study)
3. Access to the full text of the article
4. Studies that reported the percentage or frequency of prevalence of depression or anxiety in patients with TS.

## Exclusion criteria

1. Studies unrelated to the objective of the study
2. Interventional studies (clinical trial study, field trial study and social trial study), qualitative studies, case series, case reports, letter to editor, articles presented at conferences, reviews, systematic review and meta-analysis, dissertations and animal studies
3. The full text of the article is not available



4. Repeated and overlapping studies in different databases

### Selection process of studies

After determining the search strategy for each database, all articles obtained from different databases were entered EndNote X8 software. First, all repeated and overlapping studies in different databases were excluded. The names of the authors, institutes and journals of all studies were then excluded. At the next stage, the title and abstract of the studies were reviewed and unrelated studies were excluded. Then, full text of the remaining articles were thoroughly reviewed according to inclusion and exclusion criteria and irrelevant studies were excluded. Finally, articles that met all inclusion criteria entered the qualitative evaluation.

### Qualitative evaluation of studies

Qualitative evaluation of studies was performed using Joanna Briggs Institute (JBI) checklist, which is a standard and well-known checklist for qualitative evaluation of prevalence studies [15]. This checklist has 9 different questions about: (1) sample frame, (2) participants, (3) sample size, (4) study subject and setting described in detail, (5) data analysis, (6) valid methods for identifying conditions, (7) measure the situation, (8) statistical analysis and (9) adequate response rate. For scoring, "Yes" was awarded if mentioned, "No" was awarded if not mentioned, and "NA" was awarded if not reported. The minimum and maximum scores based on the number of "Yes" were 0 and 9, respectively. The results of qualitative evaluation of studies based on JBI checklist items are reported in Table 1.

### Data extraction

Data were extracted using a pre-prepared checklist. The various items on this checklist included name of the corresponding author, year of publication of the article, sample size (total, male and female), country, diagnostic tools for depression and anxiety, prevalence, age of patients and population studied.

### Statistical analysis

The index studied in this study was the prevalence of depression and anxiety in patients with TS, which was used to combine the results of different studies on the frequency in each study. Heterogeneity between studies was investigated by  $I^2$  and due to the high heterogeneity between the results of studies included in the meta-analysis ( $I^2$  75%), the random effects model was used. Funnel Plot and Egger's regression intercept were used to investigate publication bias. Meta-regression was also

used to investigate the relationship between the prevalence of depression and anxiety in patients with TS with sample size, year of publication and mean age of patients. Subgroup analysis was performed according to the study population. Data analysis was performed by Comprehensive Meta-Analysis software (Version 2) and P value less than 0.05 was considered as statistically significant.

## Results

### Stages of articles entry in meta-analysis

A total of 496 studies were found in the initial search using the search strategies identified for the various databases. 2 studies were added through manual search. 224 studies were repeated in different databases and excluded. 274 studies were reviewed by title and abstract, of which 239 studies were excluded due to irrelevance. Full-text of remaining 35 studies was reviewed, of which 23 studies were excluded due to not meeting all inclusion criteria. Finally, the remaining 12 articles entered the qualitative evaluation and none of the studies based on JBI checklist were of poor quality. The stages of PRISMA 2020 flow chart are shown in Fig. 1.

### General information of the articles

The total sample size of the studies was  $n=3812$ . The highest and lowest sample sizes were related to the 2019 study in the USA [21] with  $n=1428$  and the 2021 study in Spain [26] with  $n=22$ , respectively. Two-thirds of the studies have been conducted on children or adolescents. The oldest and newest studies were in 1997 and 2021, respectively. 50% of the studies have been conducted in the UK. Also, the studied studies reported the prevalence of depression between 8.7% and 73% and the prevalence of anxiety between 31.4% and 80%. The data of the articles entered systematic review and meta-analysis are given in Table 2.

### Meta-analysis of the prevalence of depression and anxiety in patients with TS

The results of  $I^2$  test for the global prevalence of depression and anxiety in patients with TS indicated a significant heterogeneity between studies (depression=98.63 and anxiety=96.91). So, random effect model was used for data analysis (Table 3). According to funnel plot (Figs. 2 and 3) and the results of Egger's regression intercept, there was no publication bias among the studies at the level of 0.1 (depression=0.685 and anxiety=0.410). As a result of combining the results of all studies, the prevalence of depression in patients with TS; 36.4% (95% confidence interval: 21.1–54.9%) and prevalence of anxiety in patients with TS; 53.5% (95% confidence interval: 39.9–66.6%) was estimated by random effect model (Figs. 4 and 5) (black square percentage and the length of

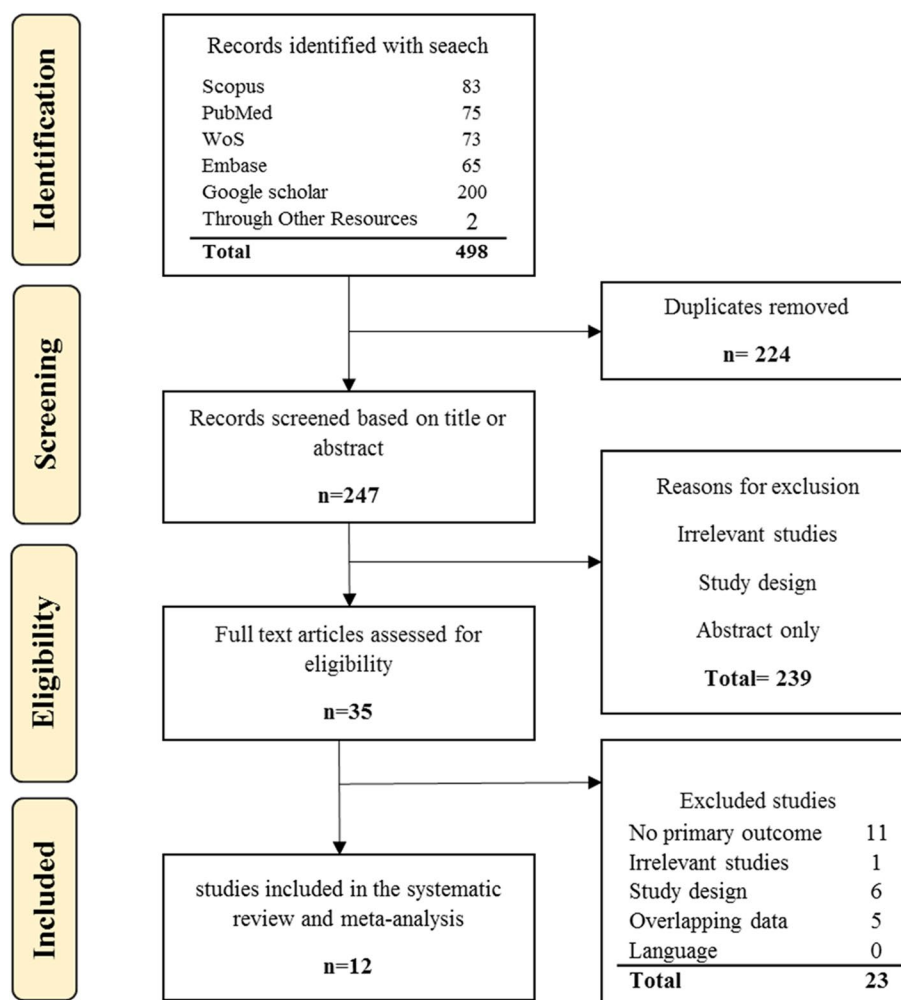


Fig. 1 PRISMA 2020 flow diagram for article selection

the line on which the 95% confidence interval is located in each study, the rhomb represents the total estimate of the prevalence). The results of sensitivity analysis showed that by excluding each of the studies, the final estimate of the prevalence percentage does not change significantly (Figs. 6 and 7).

### Meta-regression of prevalence of depression and anxiety in patients with TS

Using meta-regression, the relationship between potential factors such as sample size (Figs. 8 and 9), year of study (Figs. 10 and 11) and mean age of patients (Figs. 12 and 13) and the total estimate of the prevalence of depression and anxiety in patients with TS was investigated. The results showed that by increasing sample size, the prevalence of depression (Fig. 8) and anxiety (Fig. 9) reduced significantly ( $P < 0.001$ ). By increasing year of study, the prevalence of anxiety (Fig. 11) reduced

significantly ( $P < 0.001$ ), but the relationship between year of study and prevalence of depression (Fig. 10) was not significant ( $P > 0.05$ ). By increasing mean age (9–31.5 years) of patients, the prevalence of depression (Fig. 12) and anxiety (Fig. 13) increased significantly ( $P < 0.001$ ).

### Subgroup analysis

Due to the high heterogeneity among the studies, subgroup analysis by population was reported in Table 4. The highest prevalence of depression and anxiety in patients with TS in the adult population was estimated to be 47.9% (95% confidence interval: 27.6–68.9%) and 61.3% (95% confidence interval: 34.7–82.5%), respectively (Table 4).

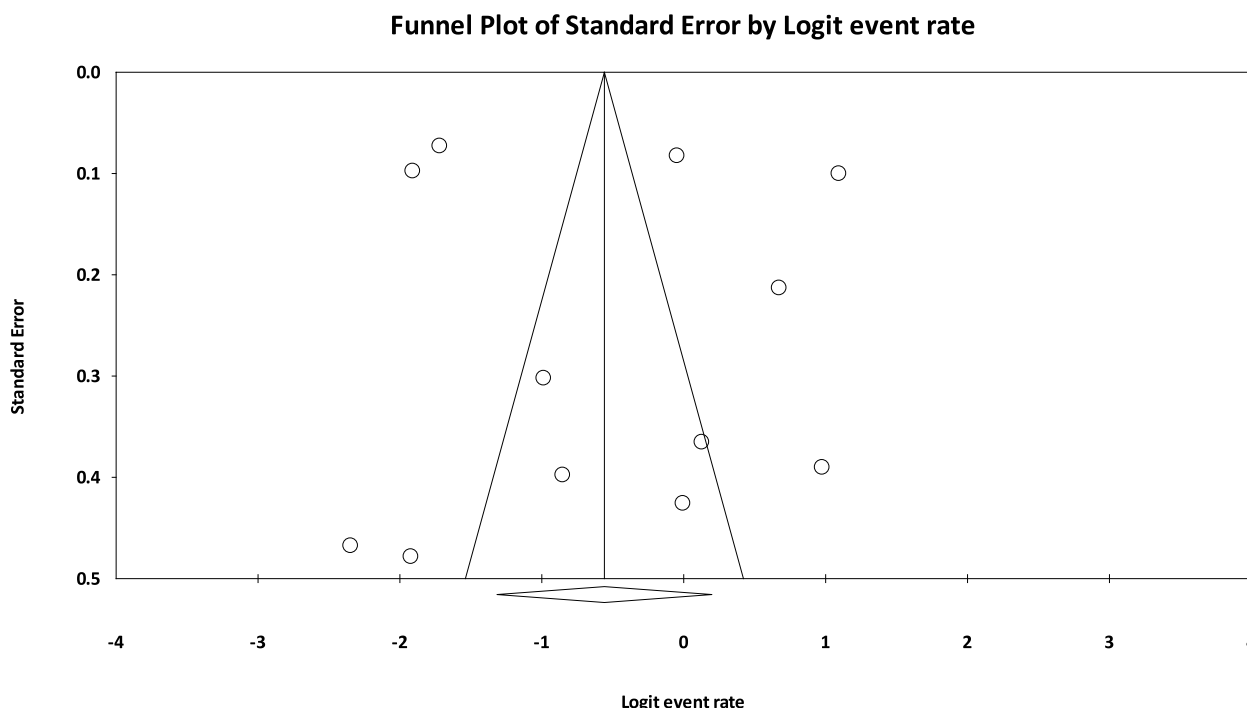
### Discussion

The present systematic review and meta-analysis was performed to determine the prevalence of depression and anxiety in patients with TS. Finally, after combining

**Table 2** Specifications and data of articles entered for systematic review and meta-analysis

First author, year, (reference)	Country	Sample size (n)		Age (year)	Diagnostic tool		Prevalence (%)		Population	
		Total	Male		Female	Depression	Anxiety	Depression		Anxiety
BSc, 1998 [16]	UK	30	17	13	9.0	BCDI	-	29.0	-	Children
Robertson, 2006 [17]	UK	918	-	-	9.0	DSM-IV-TR	-	13.0	-	Children
Berthier, 1998 [18]	Spain	30	13	17	31.5 ± 11.0	HDRS	TBSA	53.0	73.0	Adult
Robertson, 1997 [19]	UK	39	31	8	26.2 (11–55)	BDI	Spielberger	12.3	44.6	Adult
Gharatya, 2014 [20]	UK	524	-	-	26.9	BDI	Spielberger	75.0	80.0	Adult
Whitney, 2019 [21]	USA	1428	-	-	11.5	BDI	Spielberger	15.3	37.9	Children and Adolescents
Robertson, 2015 [22]	UK	578	422	156	25.4 ± 14.3	DSM	DSM	49.0	43.0	Adult
Rizzo, 2017 [23]	Italy	98	81	17	12.2 ± 0.7	CDI	MASC	66.7	44.8	Children and Adolescents
Robertson, 2002 [24]	UK	57	45	12	10.7 ± 3.0	DSM-III-R	-	8.7	-	Children and Adolescents
Baglioni, 2014 [25]	Italy	55	40	15	17.6	DSM-IV-TR	DSM-IV-TR	27.44	31.4	Children and Adolescents
Solis-García, 2021 [26]	Spain	22	19	3	11.0	DSM-5	DSM-5	50.0	72.7	Children and Adolescents
Wodrich, 1997 [27]	USA	33	25	8	9.4 ± 2.3	DSM-III-R	DSM-III-R	73.0	55.0	Children and Adolescents





**Fig. 2** Results of funnel plot for estimating the total prevalence of depression

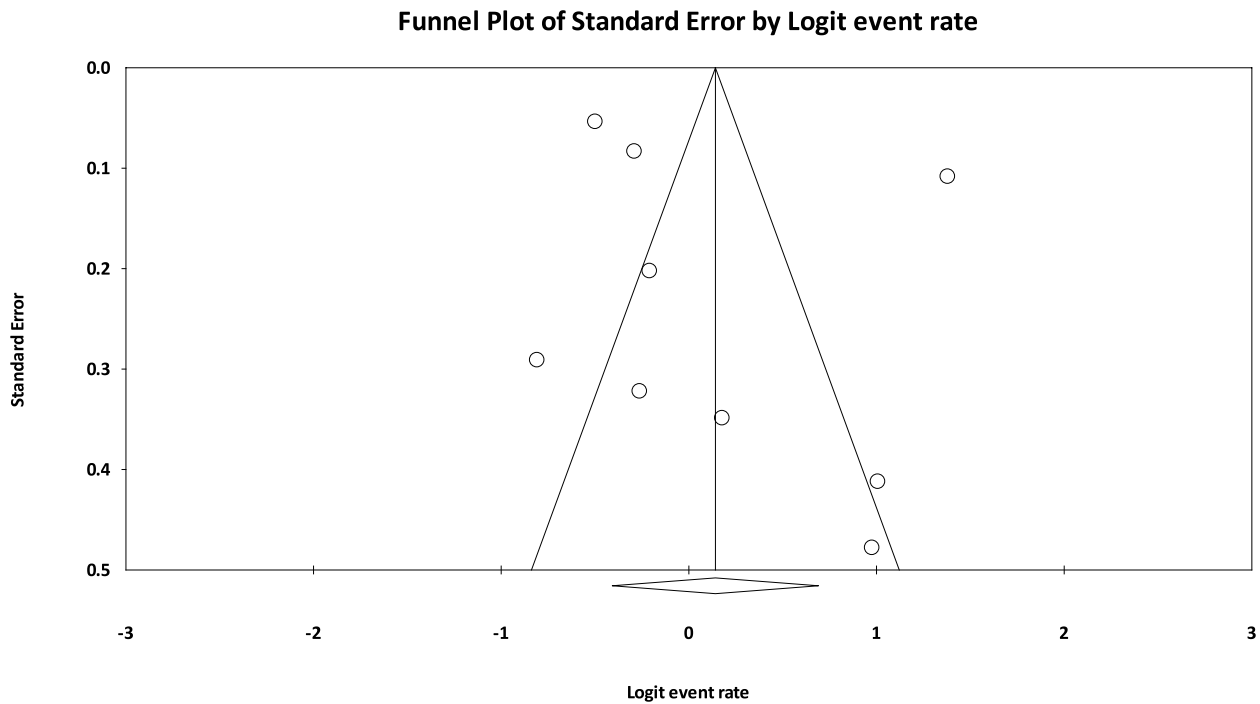
the data obtained from 12 articles entered the meta-analysis, the prevalence of depression and anxiety was 36.4% and 53.5% in these patients, respectively. The highest prevalence of depression and anxiety was reported by Gharatya et al. (75% and 80%, respectively) [20]. The lowest prevalence of depression was reported by Robertson et al. (8.7%) [24] and the lowest prevalence of anxiety was reported by Baglioni et al. (31.4%) [25]. The highest quality assessment score [8] based on JBI checklist was related to a 2017 study in Italy [23], which reported a 66.7% prevalence of depression and a 44.8% prevalence of anxiety in patients with TS.

To the best of our knowledge, no systematic review or meta-analysis has been performed to estimate the prevalence of depression and anxiety in patients with TS. According to a meta-analysis by Kisely et al., the prevalence of depression and anxiety was 12.5% and 3.4% in the general population, respectively [28]. Also, Salari et al. reported the prevalence of anxiety and depression 29.6% and 33.7% in the general population during Covid-19 pandemic, respectively [29]. Comparison of the results of the above meta-analyses with the present study showed that the prevalence of depression and anxiety in patients with TS was higher than the general population, which requires special attention of health officials and policy makers.

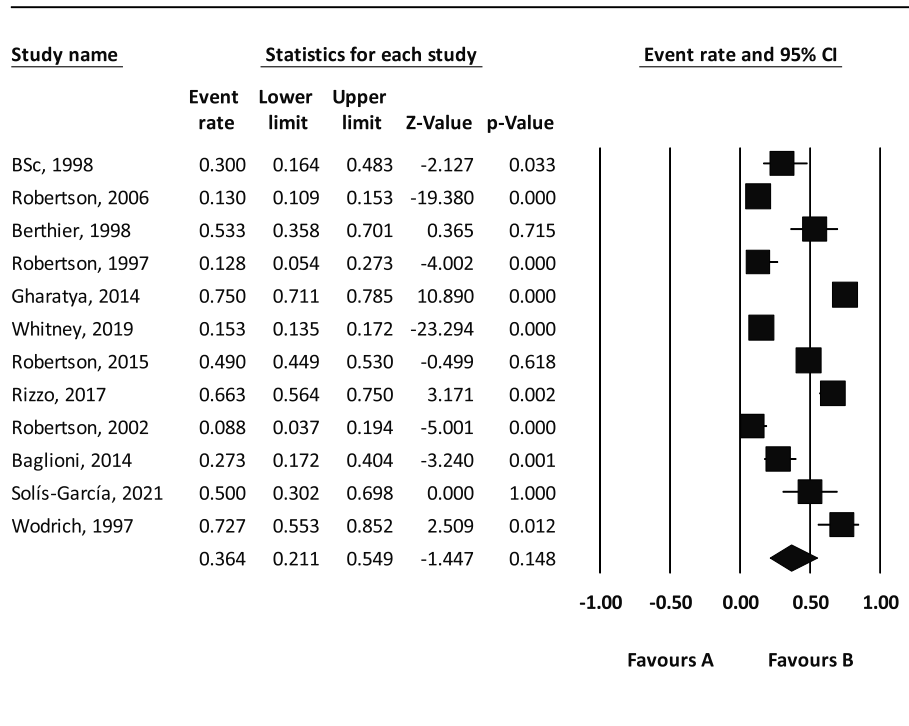
There is evidence of dopamine involvement in tic disorders, based on the fact that dopamine antagonist drugs such as haloperidol suppress tics and factors that increase central dopaminergic activity, such as Ritalin, exacerbate tics. The relationship between tics and dopamine is not a simple one and has not yet been fully known [30]. There is also evidence of dysfunction of the cerebral cortex circuits involved in motor functions. Studies using magnetic resonance imaging have shown natural asymmetry of the tail nuclei in those with these disorders [31]. Environmental and social factors also play a role in the development of this syndrome, such as smoking and high levels of stress during pregnancy, prematurity and low birth weight, psychiatric disorders, streptococcal infections and other psychological stresses. Therefore, therapeutic approaches to tic disorders can be divided into three main groups: medication, cognitive-behavioral therapy, and behavioral therapy [32].

The onset of Tourette syndrome is usually between 4 and 6 years old. The highest severity occurs between the ages of 10 and 12. So that in adolescence its intensity reduces. Many adults with Tourette syndrome experience reduced symptoms [4]. However, the results of subgroup analysis of the present study showed that the prevalence of depression and anxiety in patients with TS in the adult population was higher than other populations



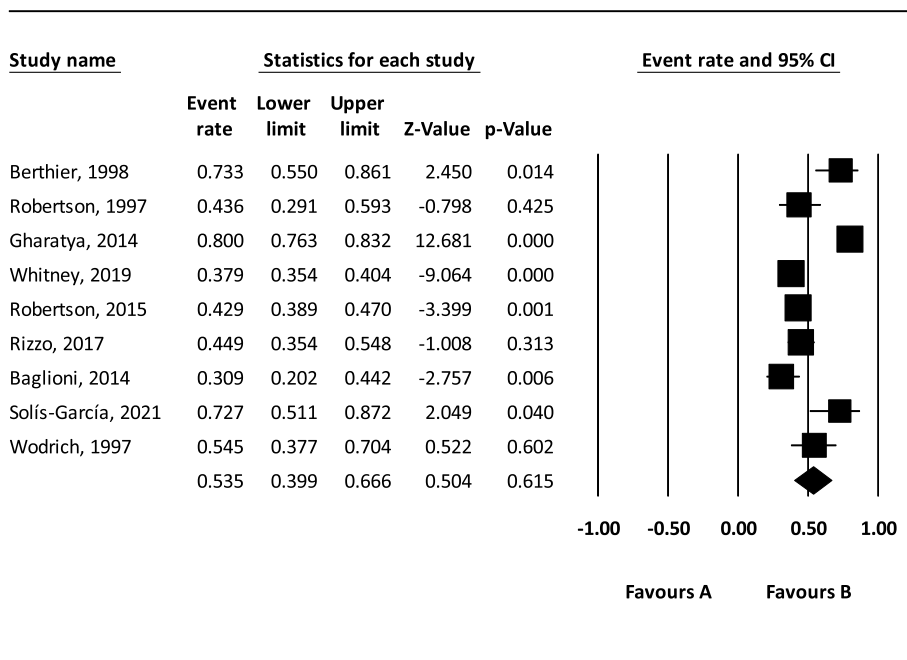


**Fig. 3** Results of funnel plot for estimating the total prevalence of anxiety



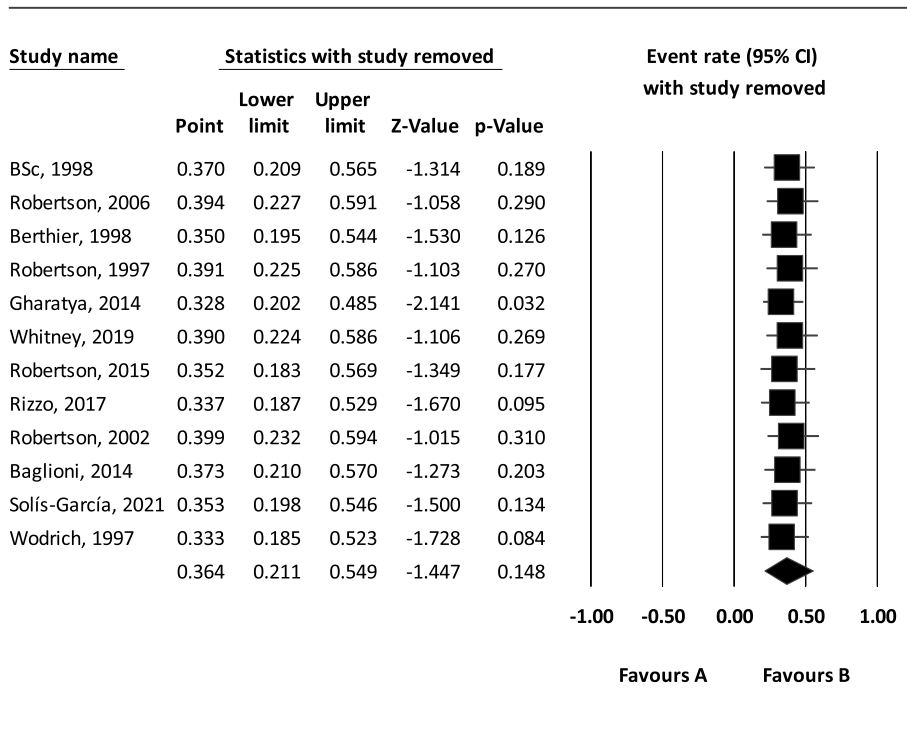
**Meta Analysis**

**Fig. 4** Forest plot for estimating the total prevalence of depression



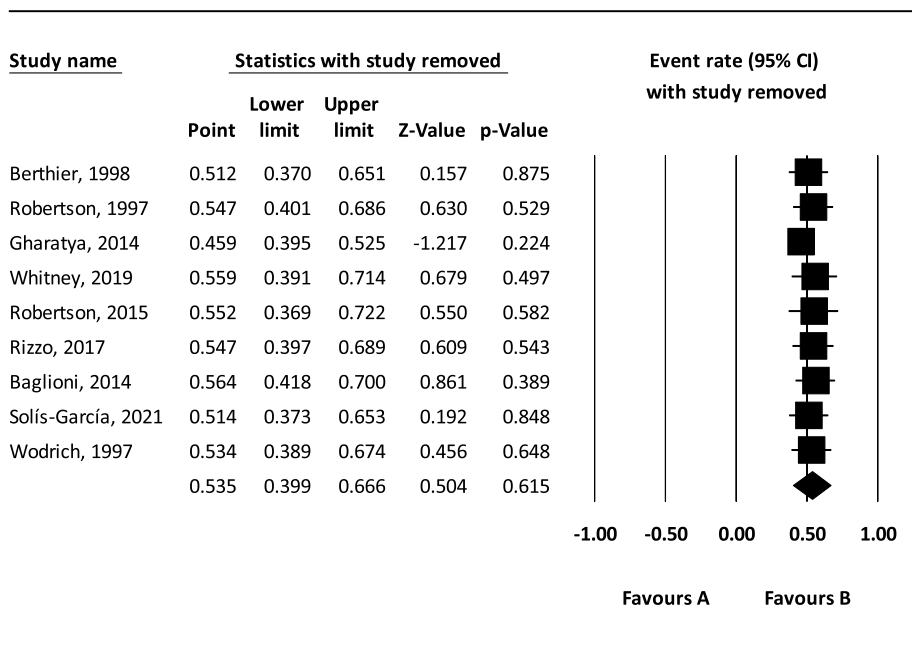
### Meta Analysis

Fig. 5 Forest plot for estimating the total prevalence of anxiety



### Meta Analysis

Fig. 6 Sensitivity analysis for estimating the total prevalence of depression



### Meta Analysis

Fig. 7 Sensitivity analysis chart for estimating the total prevalence of anxiety

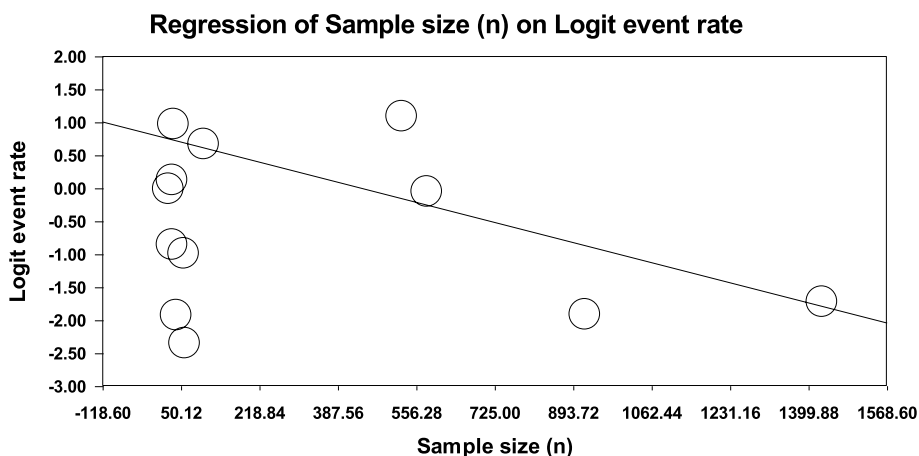


Fig. 8 Meta-regression of the relationship between sample size and prevalence depression

studied. Also, the results of meta-regression showed that by increasing mean age (9–31.5 years), the prevalence of depression and anxiety in patients with TS increased significantly. The reasons for the higher prevalence of depression and anxiety with age can be the influence of social environment, university and work, pubertal stress, substance abuse, negative thinking patterns, differences in the brain (adolescents’ brain is structurally different

from adults’ brain), changes in the brain circuits of adolescents play a role in the risk-reward response, and increase stress levels. The adolescents with anxiety and depression have different neurotransmitters, including dopamine, serotonin, and norepinephrine in their brains affecting mood and behavior) and etc.

The high prevalence of depression and anxiety in patients with TS in different populations, especially

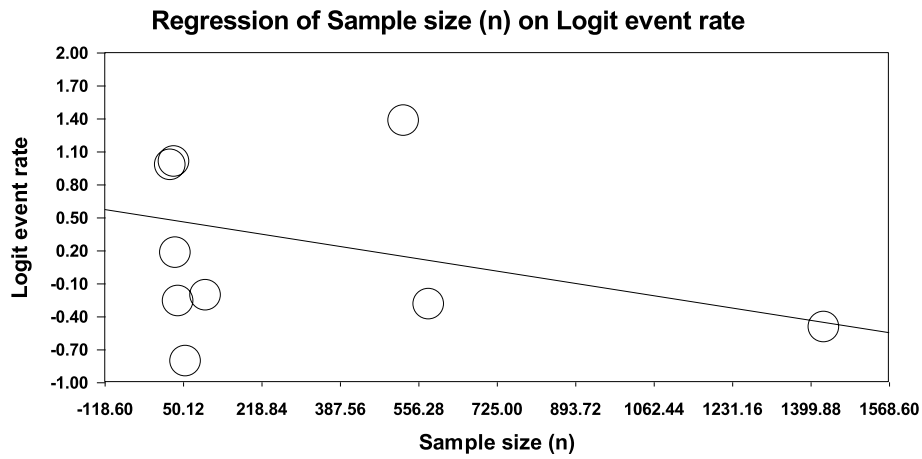


Fig. 9 Meta-regression of the relationship between sample size and prevalence anxiety

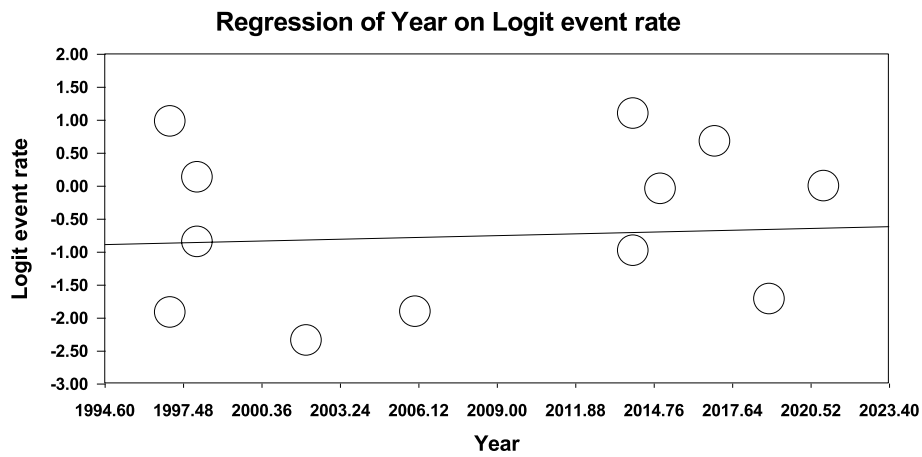


Fig. 10 Meta-regression between years of study and prevalence depression

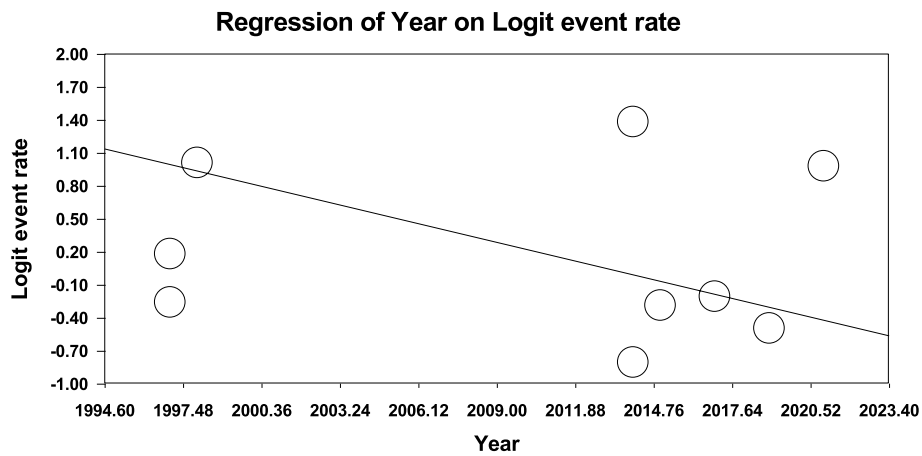
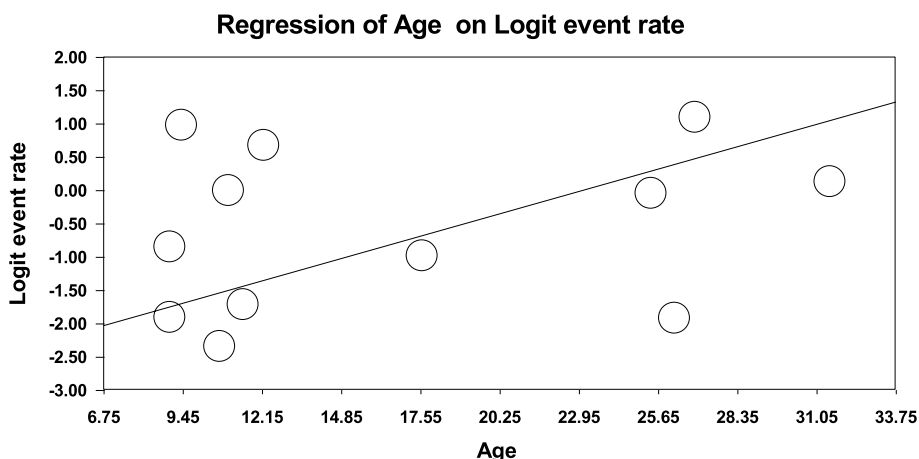
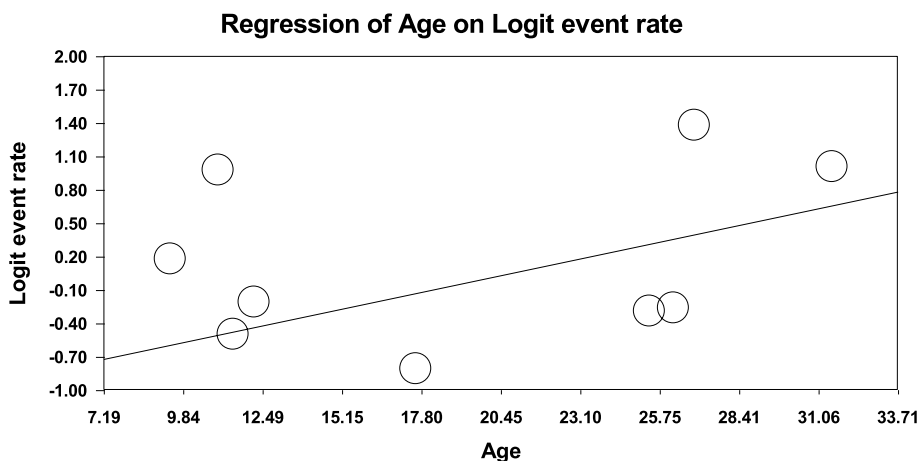


Fig. 11 Meta-regression between years of study and prevalence anxiety



**Fig. 12** Meta-regression between the mean age of patients and prevalence depression



**Fig. 13** Meta-regression of the relationship between the mean age of patients and prevalence anxiety

in young people, indicates the need for investigation and follow-up for these disorders in these patients. Due to the complications and problems that depression and anxiety cause in these patients and its significant effect on various aspects of life, there is a need for special attention by the authorities. In order to reduce the prevalence of depression and anxiety, one should become aware of this issue, find the appropriate solution, implement these solutions, and follow up the results of the actions. This policy is effective when implemented at the individual, group and organizational levels.

Due to the small number of studies included in the meta-analysis in the systematic review and meta-analysis of the present study and most of the articles were presented in continental Europe, it was not possible to analyze subgroups according to the continent and social

environment studied. Due to the influence of culture and social environment on the prevalence of depression and anxiety, it is suggested to conduct further studies with larger sample sizes in different parts of the world, continents and cultures to determine the prevalence of these disorders more accurately in different populations and cultures.

High heterogeneity between studies (90%>) led to perform a subgroup analysis according to the study population, which reduced a small amount of heterogeneity between studies, but still heterogeneity in all subgroups is high, which may be due to demographic information, sample size and study methodology. Other limitations included the lack of uniform reporting of articles, the same method, the random selection of some samples, the small sample size of some articles, the small number of studies in some subgroups for subgroup analysis and the

**Table 4** Subgroup analysis of the prevalence of depression and anxiety

Subgroups	Number studies	Point estimate	Lower limit	Upper limit	Z-value	P-value	P-value between	I <sup>2</sup>	Standard error	Variance	Tau
Depression	4	0.479	0.276	0.689	-0.186	0.852	0.141	96.99	0.907	0.823	0.849
Children	2	0.191	0.078	0.397	-2.761	0.006		84.92	0.790	0.624	0.689
Children and Adolescents	6	0.363	0.156	0.639	-0.971	0.331		96.98	1.728	2.988	1.373
Anxiety	4	0.613	0.347	0.825	0.824	0.410	0.260	98.03	1.171	1.401	1.082
Children and Adolescents	5	0.448	0.353	0.547	-1.030	0.303		74.67	0.133	0.154	0.364

lack of access to the full text of articles presented at the conference.

## Conclusion

The results of the present systematic review and meta-analysis showed that the prevalence of depression and anxiety in patients with TS was high. Therefore, it is suggested that health officials and policy makers design measures to prevent and control these disorders.

## Abbreviations

TS	Tourette Syndrome
WoS	Web of Science
MeSH	Medical Subject Headings
PRISMA	Preferred Reporting Items for Systematic Reviews and Meta-Analysis
BCDI	Birleson Child Ickpression Invcntory
HDRS	Hamilton Depression Rating Scale
TBSA	Tyrer's Brief Scale for Anxiety
BDI	Beck Depression Inventory
CDI	Child Depression Inventory
MASC	Multidimensional Anxiety Scale for Children
DSM	Diagnostic and Statistical Manual of Mental Disorders

## Acknowledgements

This study is the result of research project No. 50001018 approved by the Student Research Committee of Kermanshah University of Medical Sciences. We would like to thank the esteemed officials of that center for accepting the financial expenses of this study.

## Authors' contributions

M.K. and P.A. contributed to the design, M.K. and S.T. participated in most of the study steps. M.K. and P.A. prepared the manuscript. P.A. and M.K. assisted in designing the study, and helped in the, interpretation of the study. All authors have read and approved the content of the manuscript.

## Funding

By Deputy for Research and Technology, Kermanshah University of Medical Sciences (IR) (50001018). This deputy has no role in the study process.

## Availability of data and materials

Datasets are available through the corresponding author upon reasonable request.

## Declarations

### Ethics approval and consent to participate

Ethics approval and consent to participate Ethics approval was received from the ethics committee of deputy of research and technology, Kermanshah University of Medical Sciences (IR.KUMS.REC.1400.790). All the methods of the present study have been carried out in accordance with the ethical standards set out in the Helsinki Declaration. This study did not include human samples and did not require informed consent.

### Consent for publication

Not applicable.

### Competing interests

The authors declare that they have no conflict of interest.

Received: 6 August 2022 Accepted: 21 November 2023  
Published online: 01 December 2023

## References

- Thapar A, Cooper M, Rutter M. Neurodevelopmental disorders. *Lancet Psychiatry*. 2017;4(4):339–46.
- Thapar A, Rutter M. Neurodevelopmental disorders. *Rutters Child Adolesc Psychiatry*. 2015;1:31–40.
- Zahn-Waxler C, Shirtcliff EA, Marceau K. Disorders of childhood and adolescence: gender and psychopathology. *Annu Rev Clin Psychol*. 2008;4:275–303.
- Edition F. Diagnostic and statistical manual of mental disorders. *Am Psychiatric Assoc*. 2013;21:591–643.
- Knight T, Steeves T, Day L, Lowerison M, Jette N, Pringsheim T. Prevalence of tic disorders: a systematic review and meta-analysis. *Pediatr Neurol*. 2012;47(2):77–90.
- Yang C, Zhang L, Zhu P, Zhu C, Guo Q. The prevalence of tic disorders for children in China: a systematic review and meta-analysis. *Medicine*. 2016;95(30):e4354.
- Scharf JM, Miller LL, Gauvin CA, Alabiso J, Mathews CA, Ben-Shlomo Y. Population prevalence of Tourette syndrome: a systematic review and meta-analysis. *Mov Disord*. 2015;30(2):221–8.
- Levine JL, Szejko N, Bloch MH. Meta-analysis: adulthood prevalence of Tourette syndrome. *Prog Neuropsychopharmacol Biol Psychiatry*. 2019;95:109675.
- Xiao H, Zhang Y, Kong D, Li S, Yang N. The effects of social support on sleep quality of medical staff treating patients with coronavirus disease 2019 (COVID-19) in January and February 2020 in China. *Med Sci Monit*. 2020;26:e923549–51.
- Chew NW, Lee GK, Tan BY, Jing M, Goh Y, Ngiam NJ, et al. A multinational, multicentre study on the psychological outcomes and associated physical symptoms amongst healthcare workers during COVID-19 outbreak. *Brain Behav Immun*. 2020;88:559–65.
- Zhang C, Yang L, Liu S, Ma S, Wang Y, Cai Z, et al. Survey of insomnia and related social psychological factors among medical staff involved in the 2019 novel coronavirus disease outbreak. *Front Psychiatry*. 2020;11:306.
- Mahnaz A, Meinour L, Soghraf F, Mariam N. The effect of counseling on anxiety after traumatic childbirth in nulliparous women; a single blind randomized clinical trial. 2010.
- Liu C-Y, Yang Y-Z, Zhang X-M, Xu X, Dou Q-L, Zhang W-W, et al. The prevalence and influencing factors in anxiety in medical workers fighting COVID-19 in China: a cross-sectional survey. *Epidemiol Infect*. 2020;148:98.
- Page MJ, McKenzie JE, Bossuyt PM, Boutron I, Hoffmann TC, Mulrow CD, et al. The PRISMA 2020 statement: an updated guideline for reporting systematic reviews. *Int J Surg*. 2021;88:105906.
- Munn Z, Moola S, Lisy K, Riitano D, Tufanaru C. Methodological guidance for systematic reviews of observational epidemiological studies reporting prevalence and cumulative incidence data. *Int J Evid Based Healthc*. 2015;13(3):147–53.
- Mason A, Banerjee S, Eapen V, Zeitlin H, Robertson MM, et al. The prevalence of Tourette syndrome in a mainstream school population. *Devel Med Child Neurol*. 1998;40(5):292–6.
- Robertson MM. Mood disorders and Gilles de la Tourette's syndrome: an update on prevalence, etiology, comorbidity, clinical associations, and implications. *J Psychosom Res*. 2006;61(3):349–58.
- Berthier ML, Kulisevsky J, Campos VM. Bipolar disorder in adult patients with Tourette's syndrome: a clinical study. *Biol Psychiat*. 1998;43(5):364–70.
- Robertson MM, Banerjee S, Fox-Hiley PJ, Tannock C. Personality disorder and psychopathology in Tourette's syndrome: a controlled study. *Br J Psychiatry*. 1997;171(3):283–6.
- Gharatya A, Stern J, Man C, Williams D, Simmons H, Robertson M. Suicidality in patients with tourette's syndrome. *J Neurol Neurosurg Psychiatry*. 2014;85(8):e3-e.
- Whitney DG, Shapiro DN, Warschausky SA, Hurvitz EA, Peterson MD. The contribution of neurologic disorders to the national prevalence of depression and anxiety problems among children and adolescents. *Ann Epidemiol*. 2019;29:81–4. e2.
- Robertson MM, Cavanna AE, Eapen V. Gilles de la Tourette syndrome and disruptive behavior disorders: prevalence, associations, and explanation of the relationships. *J Neuropsychiatry Clin Neurosci*. 2015;27(1):33–41.

23. Rizzo R, Gulisano M, Martino D, Robertson MM. Gilles de la Tourette syndrome, depression, depressive illness, and correlates in a child and adolescent population. *J Child Adolesc Psychopharmacol*. 2017;27(3):243–9.
24. Robertson MM, Banerjee S, Eapen V, Fox-Hiley P. Obsessive compulsive behaviour and depressive symptoms in young people with Tourette syndrome. *Eur Child Adolesc Psychiatry*. 2002;11(6):261–5.
25. Baglioni V, Stornelli M, Molica G, Chiarotti F, Cardona F. Prevalence of anxiety disturbs in patients with Tourette syndrome and tic disturb. *Riv Psichiatr*. 2014;49(5):243–50.
26. Solís-García G, Jové-Blanco A, Chacón-Pascual A, Vázquez-López M, Castro-De Castro P, Carballo J, et al. Quality of life and psychiatric comorbidities in pediatric patients with Gilles de la Tourette syndrome. *Rev Neurol*. 2021;73(10):339–44.
27. Wodrich DL, Benjamin E, Lachar D. Tourette's syndrome and psychopathology in a child psychiatry setting. *J Am Acad Child Adolesc Psychiatry*. 1997;36(11):1618–24.
28. Kisely S, Alichniewicz KK, Black EB, Siskind D, Spurling G, Toombs M. The prevalence of depression and anxiety disorders in indigenous people of the Americas: a systematic review and meta-analysis. *J Psychiatr Res*. 2017;84:137–52.
29. Salari N, Hosseinian-Far A, Jalali R, Vaisi-Raygani A, Rasoulpoor S, Mohammadi M, et al. Prevalence of stress, anxiety, depression among the general population during the COVID-19 pandemic: a systematic review and meta-analysis. *Glob Health*. 2020;16(1):1–11.
30. Sadock BJ, Kaplan & Sadock's synopsis of psychiatry: behavioral sciences/clinical psychiatry. 2007.
31. Murphy TK, Lewin AB, Storch EA, Stock S. Practice parameter for the assessment and treatment of children and adolescents with tic disorders. *J Am Acad Child Adolesc Psychiatry*. 2013;52(12):1341–59.
32. Ludolph AG, Roessner V, Münchau A, Müller-Vahl K. Tourette syndrome and other tic disorders in childhood, adolescence and adulthood. *Dtsch Arztebl Int*. 2012;109(48):821.

### Publisher's Note

Springer Nature remains neutral with regard to jurisdictional claims in published maps and institutional affiliations.

Ready to submit your research? Choose BMC and benefit from:

- fast, convenient online submission
- thorough peer review by experienced researchers in your field
- rapid publication on acceptance
- support for research data, including large and complex data types
- gold Open Access which fosters wider collaboration and increased citations
- maximum visibility for your research: over 100M website views per year

At BMC, research is always in progress.

Learn more [biomedcentral.com/submissions](https://biomedcentral.com/submissions)

